



Activities with Asian Universities at Waseda University

2005. 1. 18

Takeshi Ikenaga

The Graduate School of Information,
Production and Systems (IPS)

Waseda University





Outline



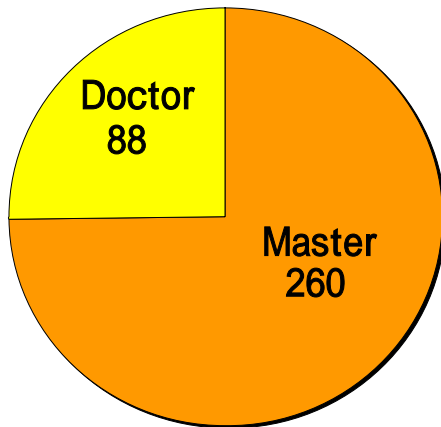
- Current situation of IPS Waseda
- Joint research projects by the Kitakyushu international exchange program
 - National Taiwan University
 - Tsinghua University
 - Fudan University & Shanghai Jiao Tong University
- Other activities
 - Waseda University System LSI International Workshop
 - Special lectures by distinguished visiting professors
 - Kitakyushu Human technology cluster project



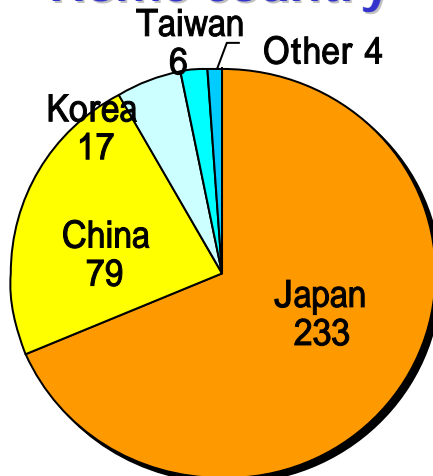
Situation of IPS Waseda



of students



Home country



<Taiwan>

National Taiwan Univ. *, National Tsing Hua Univ. * +, National Chiao Tung Univ. *, National Cheng Kung Univ. * #

<Korea>

KAIST * +, Seoul National Univ. *, Hanyang Univ. *, Korea Polytechnic Univ. * #

<China>

Tsinghua Univ. * #, Peking Univ. * #, Shanghai Jiao Tong Univ. * #, Dalian Univ. of Tech. #, Fudan Univ. * #

<India>

Indian Institute of Science #

<USA>

UC Berkeley +, Stanford Univ. +

* : Joint research projects or agreement
+ : Special lectures by visiting professors
: Acceptance of researchers or students



- Project theme:
 - System LSI design automation
- Principal member:
 - Prof. L. G. Chen, Prof. Y. W. Chang and Prof. J. L. Huang from NTU
 - Prof. T. Yoshimura, Prof. S. Kimura and Prof. S. Goto from Waseda
- NTU-Waseda System LSI workshop
 - Nov. 27, 2004 at IPS Waseda
 - Speakers: **7 professors (NTU) and 6 professors (Waseda)**
 - Topics: Multimedia SoCs, Sensor network, RF IC, Formal verification, Physical design and testing





Tsinghua University



- Project theme:
 - Design methodologies for multimedia system LSI
- Principal member:
 - Prof. X. Hong, Prof. S. Dong and Prof. S. Yang from Tsinghua
 - Prof. S. Goto and Prof. T. Ikenaga from Waseda
- Visiting Waseda for discussion:
 - Prof. Hong and Prof. Dong: July 2004
 - Prof. Yang and Prof. Dong: Dec. 2004
 - Prof. Dong: Jan. 2005
- Inter-division agreement on an exchange faculties and students
- # of students from Tsinghua Univ.
 - Post doctor: 2, PhD: 5 and Master: 8





Fudan University

Shanghai Jiao Tong University



- Project theme:
 - Low power & high speed analog LSI design
- Principal member:
 - Prof. M. Hao and Prof. B. Shen from Fudan
 - Prof. J. Mao and Prof. X. Li from Jiao Tong
 - Prof. Y. Inoue from Waseda
- Visiting Waseda for workshop and meeting:
 - Nov. 17-22, 2004: Prof. B. Shen and Prof. F. Zhou (Fudan)
 - Nov. 17-27, 2004: Prof. X. Li (Jiao Tong)





Waseda University System LSI International Workshop



- Theme: Research and education in System LSI
- Date: Jan. 26, 2004 at Kokura
- Speakers
 - <Taiwan> Prof. Y. W. Chang (National Taiwan Univ.), Prof. L. R. Dung (National Chiao Tung Univ.), Prof. B. D. Liu (National Cheng Kung Univ.) and Prof. C. W. Wu (National Tsing Hua Univ.)
 - <China> Prof. X. Hong and Prof. S. Dong (Tsinghua Univ.)
 - <Korea> Prof. J. Chong (Hanyang Univ.)
 - <India> Prof. S. K. Nandy (Indian Institute of Science)
 - <USA> Prof. C. K. Cheng (UC San Diego)
 - <Japan> Univ. of Tokyo, Chuo Univ., Waseda Univ., NEC, Toshiba and Fujitsu
- # of Attendants: 85
- Sponsored by MEXT (new training project), Kitakyushu city and Kitakyushu Convention Bureau





Special lectures by distinguished visiting professors



- **Prof. C. L. Liu, National Tsing Hua University**
 - Jan. 12 – 15, 2004 & Jan. 12 – 16, 2005
 - “Computer-aided design of VLSI circuits and combinatorial optimization”
- **Prof. Chong-Ming Kyung, KAIST**
 - Dec. 19 – 22, 2004
 - “Codesign and co-verification methods”
- **Prof. G. De Micheli, Stanford University**
 - Nov. 24 – 29, 2004
 - “Robust and reliable system on chip design”
- **Prof. E. S. Kuh, UC Berkeley** (Dec. 2003)
- Sponsored by MEXT (new training project)

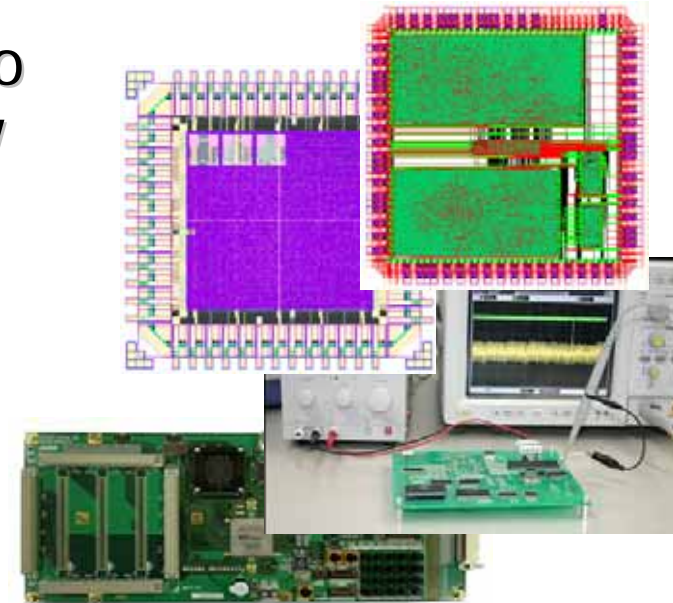




Kitakyushu human technology cluster project



- Japanese government invests \$4.5 M to universities every year to incubate new business in system LSI.
- Waseda University is a center of the Kitakyushu cluster.
 - Ubiquitous information processing SoC
 - MEMS/LSI integration
 - Prototyping LSI design
- International members
 - Prof. J. W. Chong, Hanyang Univ. (Visiting Waseda for discussion and research collaboration on Dec. 2004)
 - Prof. J. K. Choi, Korea Polytechnic Univ. (Visiting Waseda for research collaboration on July 2004)





Summary



- Collaboration between Asian countries become more and more important in System LSI field to be a leader in the world.
- The System LSI field of Waseda Univ. values the joint activities above everything else.
 - Kitakyushu international exchange program
 - Workshop and special lectures
 - Kitakyushu Human technology cluster

:

We will continue to promote these activities with Asian universities!

